



# TL mag

True Living of Art & Design

10  
ans / years



Media Kit 2019

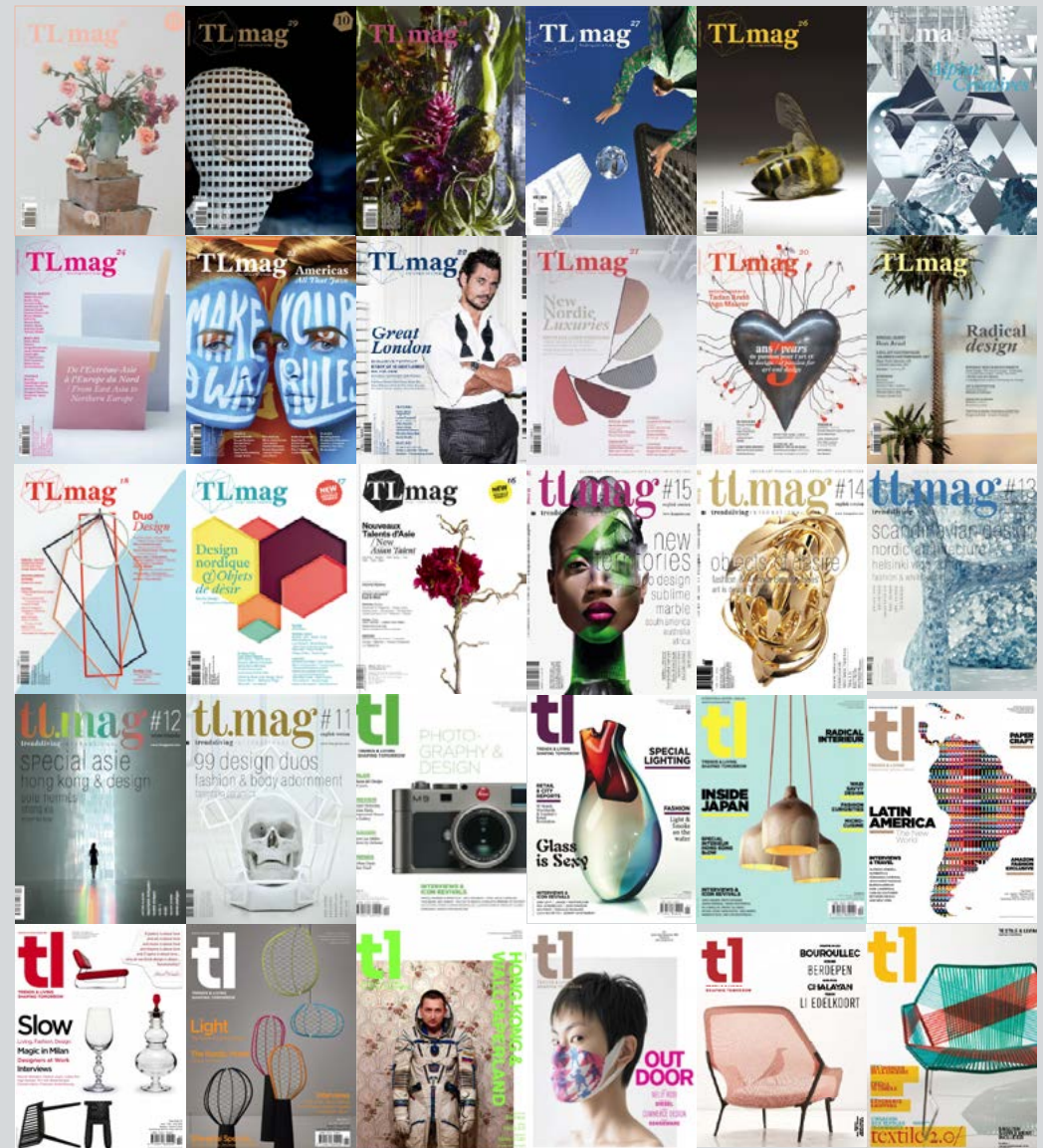
# Ethos



Founded in 2008 by Lise Coirier and her Brussels-based creative consultancy Pro Materia, TLmag celebrates its 10 years anniversary in 2018. Entering in a new era, the magazine is a widely-recognized high end art and design biannual publication capturing and contextualizing art and design and connecting them to the vibrant contemporary collector culture. Published in French and English, each edition focuses on a specific theme, while TLmag Online Magazine mirrors the ethos and structure of print issues with daily interviews and features which are deepening the biannual magazine's content and enriches its critical eye and perspective.

Extraordinary, diverse and abundant, TLmag advocates for authenticity, transcending different disciplines, from the contemporary applied arts, to design and photography and revealing their hidden intersections and narratives. TLmag becomes an essential resource for an ever-growing creative community – art and design-driven readers, creative professionals, artists, designers, architects, landscape and urban planners, philosophers, ... students, brands, art and design museums and institutions in search of precise, exceptional and unequalled creations.

TLmag is curated by:



# Print Issues

Published twice a year since a decade, bilingual French /English bookazine-like issues explore specific cultural places and territories places or the correlation between different creative and multidisciplinary scenes. Still, strategic themes reveal the connection that link leading creatives beyond their culture or practice. Each TLmag issue is divided into six or seven chapters. Special Guest interviews profile recognised and emerging figures while Stories spotlight leading brands. Excellence & Creation surveys up-and-coming talents working in various disciplines. Mix & Match features full-page photo portfolios and historical highlights to offer further inspiration. Living with Art & Design reveals private and public collections in exclusive description and image. Last but not least, Real Life translates how research and experimentation are put into practice. City reports are joins by in-depth looks at major events, culinary and travel experiences.

## TLmag Editorial Calendar 2019-2020

TLmag 31 (May 2019): *The Islands of Creation*

TLmag 32 (Nov 2019): *Contemporary Applied*

### Copies

International: 20,000

Benelux: 5,000

France: 5,000

Circulation: 30,000

### ID Biannual Issue

Bilingual: FR / EN

304 pages

Digital Issue: 5.99 €

(lekiosk.com)

France / EU: 15 €

UK: 17£

Switzerland: 20 CHF

US: 20

Hong Kong: 165 HKD

China: 145 CNY

Japan: 2462 ¥

### Subscription

Available in the best press stands and specialized book stores worldwide.

Digitally spread on :

<https://www2.lekiosk.com/fr/publication/tl-mag/21426884>

(postage included)

France & Benelwux

1 year: 40 €

2 years: 60 €

3 years: 80 €

International

1 year: 60 €

2 years: 80 €

3 years: 100 €

### Sales Points & Stockists

France & Benelux:

IPS & Exportpress

Press shops and Bookstores :

Austria, Belgium, Canada, Denmark, France, Finland, Germany, Hong Kong, Italy, Japan, Luxemburg, Netherlands, Norway, Portugal, Singapore, Spain, Switzerland, Sweden, Taiwan, UK, US, ect. (new sales points every day)

Galleries and cultural venues

Design & Art fairs and events

Spazio Nobile by Pro Materia Gallery

# TLmag Special Editions

TLmag Special Editions join Pro Materia cultural projects, workshops and curatorial commissions as unique publications spotlighting creatives and/or brands. Printed in custom batches and distributed at specific events and/or venues, TLmag Special Editions are often later integrated into biannual issues. Pro Materia and TLmag continuously review and accept potential publication and exhibition proposals. Past special edition projects have included Glass is Tomorrow, Nasza Polska, TLmag Istanbul, Norwegian Crafts, Cassina Authentic Icons, Atomium Intersections, Sèvres Cité de la Céramique. In 2017, special editions will include, Stellar Works and NEARCH on Archæology and Contemporary Art. Upcoming special editions in 2019: Studio MVW Shanghai, ADAM Brussels Design Museum...

## Special Editions Rates

(inclusion in biannual issue + 5000€)

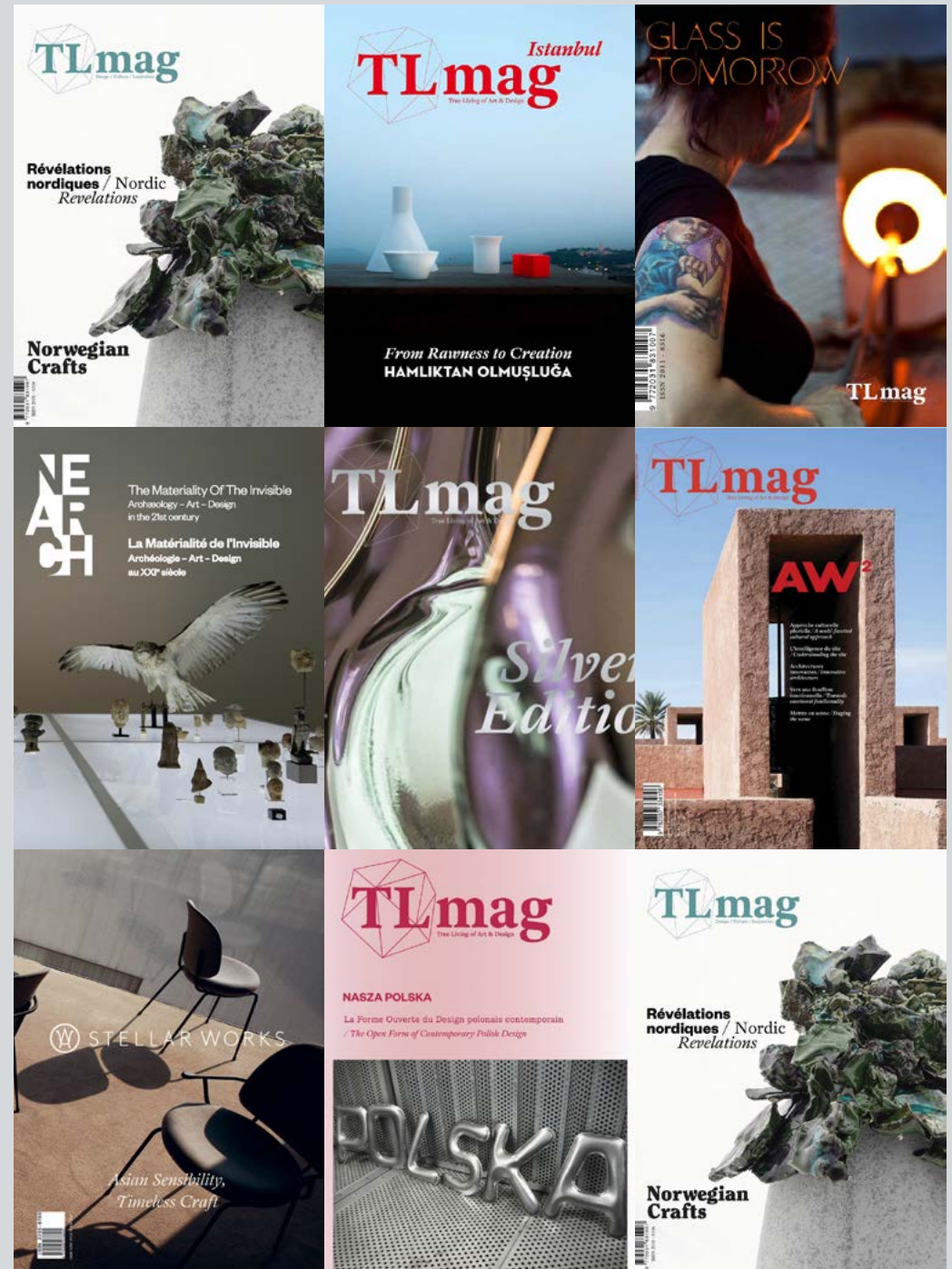
20 pages: 10.000 €

32 pages: 15.000 €

48 pages: 18.000 €

64 pages: 22.000 €

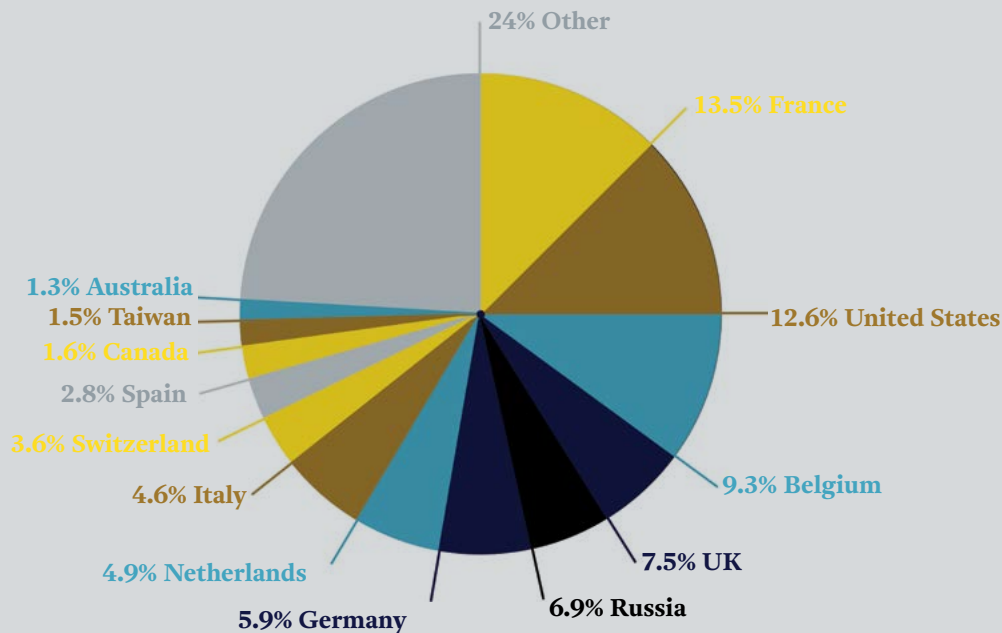
96 pages: 30.000 €



# TLmag Online Magazine

TLmag's Online Magazine expands on our biannual printed issues by following the same chapter format. Daily articles feature the latest in art and design. Online Special Editions track a wide range of partnered events: specifically curated topics and destinations. Visitors are able to order the latest print and digital issues or subscribe. In addition, they are able to explore the Pro Materia Store, featuring the various pieces and editions available at Spazio Nobile gallery in Brussels.

**Visit Statistics: month: 16.500, year: 200.000**



www.tlmagazine.com

**Kiki van Eijk: Free Spirit**  
 Tlmag 26 extended  
 Special Guests Dec 30, 2016

It is no wonder that one of Kiki van Eijk's favourite sayings is: feet on the ground, head in the beautiful (Dutch) clouds. Her career has been extremely successful ever since she graduated with honours ...

**True Living of Art and Design**  
 Tlmag is a print and online magazine dedicated to capturing and contextualising the latest innovations in craft-led and material-oriented art, architecture, design, fashion, hospitality, luxury and collector culture.

**Order TLmag**

**Design Miami 2016**  
 Our editor's picks of the Design Miami 2016 online edition

- Gaetano Pesce: Forever Young**  
Jan 2, 2017
- Grove at Grand Bay by Bjarke Ingels Group**  
Dec 17, 2016
- Anna Zaoui and Isabelle Dubern on The Invisible Collection**  
Dec 15, 2016
- British Craft Co-curated by Natalia Miyar**  
Dec 11, 2016
- Under the Endless Sky by Giovanni Beltran**  
Dec 10, 2016
- Tokujin Yoshioka for Louis Vuitton**  
Dec 4, 2016

[View all articles in this edition](#)

f t i

**THONET**  
Thonet All Seasons

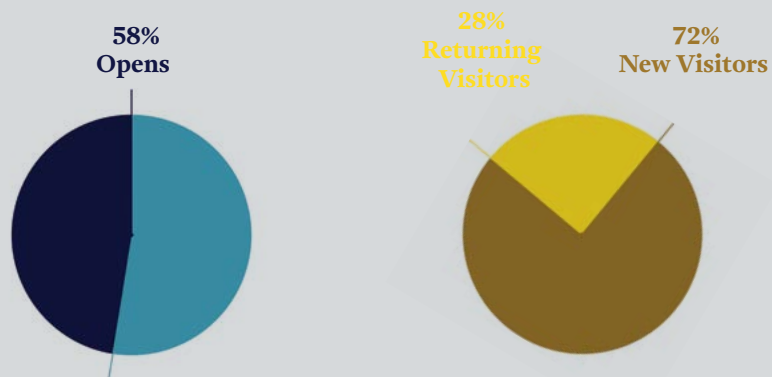
**Hands on Design**  
 8<sup>th</sup> TRIENNALE VOOR VORMGEVING  
 IN DESIGN MUSEUM GENT  
 19.11.2016 / 05.03.2017  
 DESIGNLANDEREN Design samen met Gent

# Newsletters & Social Media

TLmag sends out Monthly Digest newsletters, featuring top web and social media content. TLmag and Pro Materia issues and projects match announcements of upcoming design weeks, art and design events and fairs. TLmag also reserves space for commercial and cultural partnerships. Visitors can subscribe to our Monthly Digest newsletters online.

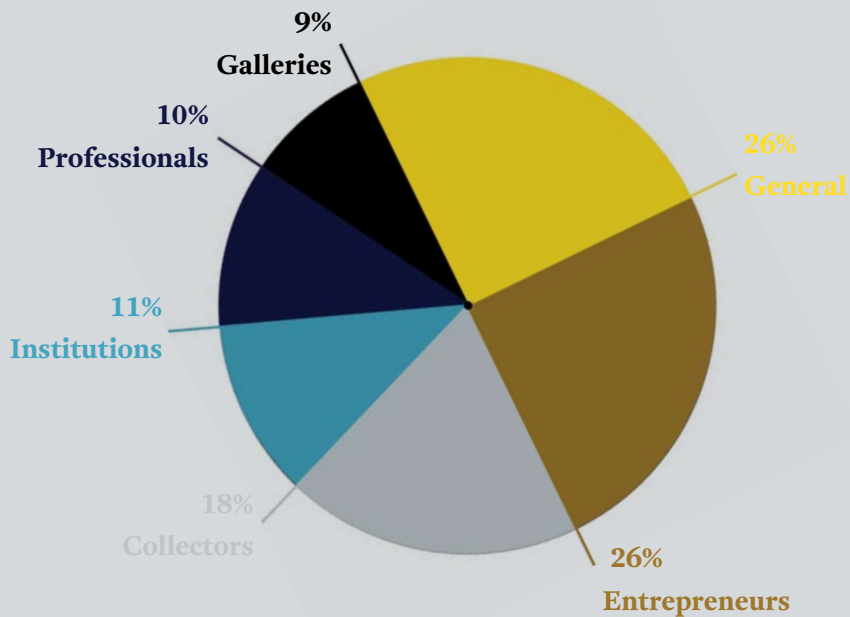
**12 Monthly Digest, +15.000 subscribers**

**Facebook: +17.5K, [facebook.com/TLmagazine](https://facebook.com/TLmagazine)  
Instagram: +11K, @tltmag**



# Readers

TLmag attracts a vast international audience From a French, Belgian and international vantage-point – tapping a rich community of contributing editors, journalists, photographers, art directors, groups urban and culturally engaged readers. As both an informative and inspirational resource, TLmag is appreciated by professional creatives, collectors, gallerists, influential taste makers, active trend watchers but also aspiring creatives and students.



# Spazio Nobile Gallery

By opening Spazio Nobile in April 2016, in the dynamic and cosmopolitan Ixelles neighbourhood of Brussels (Belgium), Lise Coirier and Gian Giuseppe Simeone have united their passions for design and art history, initiating a dialogue between contemporary applied arts, design and photography. Commissioning unique pieces, limited editions and installations that are both experimental and artistic, with a particular sensibility to everything nature and minerality, the gallery organises four to five exhibits each year, dedicated to both rising and established talents, without creating borders between the disciplines, the visual arts dialoguing with the fine arts.

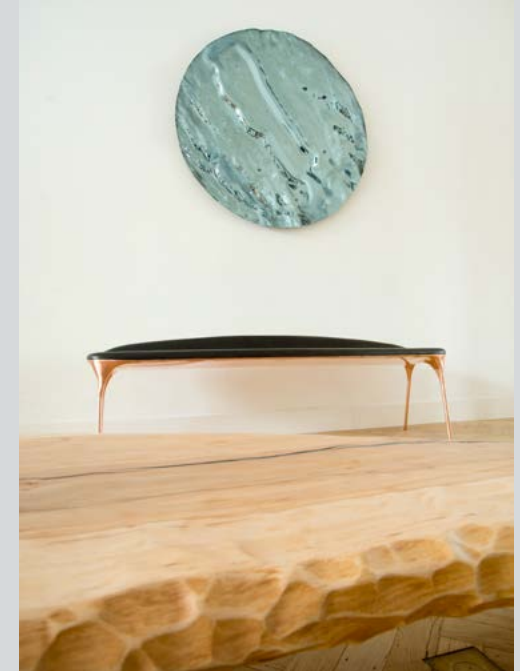
PR & Press : Sophie Carrée, [sophie@sophiecarree.be](mailto:sophie@sophiecarree.be)

**Spazio Nobile by Pro Materia Gallery**  
**Rue Franz Merjay 142,**  
**Brussels, Belgium**

[www.spazionobile.com](http://www.spazionobile.com)  
[@spazionobilegallery](https://www.instagram.com/spazionobilegallery)

SPAZIO  
— NOBILE

CONTEMPORARY APPLIED ARTS, DESIGN, PHOTOGRAPHY





Season I  
20.04 – 11.09.2016

### *Post Natural History*



Season II  
15.09 – 20.11.2016

### *Forest of Lights*

Group exhibition with, Jörg Bräuer,  
Kaspar Hamacher, Nathalie Dewez



Season III  
25.XI.2016 – 19.11.2017

### *Silver Edition*



Season IV  
23.11.2017 – 15.1V.2017

### *Crystallized*

Group exhibition with, Chen Chen &  
Kai Williams, Marie Dessuant & Philip  
Bone, Studio GGSV, Taeg Nishimoto,  
Marlène Huissoud, Tom Joyce, Antonio  
Lampecco, Richu Lacquer Art Co, Isaac  
Monté, Frederick Vidal, Philipp Weber,  
Tomáš Libertíny



Season V  
20.1V.2017 – 23.VII.2017

### *Chronosophia* Tomáš Libertíny



Season VI  
29.1X.2017 – 04.11.2018

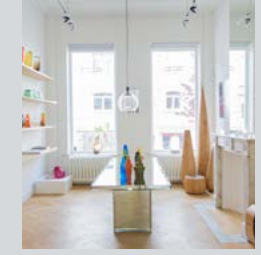
### *Blauw. Ceci n'est pas une couleur, Piet Stockmans & Frederik Vercrussse*



Season VII  
9.02 – 16.05.2018

### *Die Werkstatt*

Damien Gernay  
Kaspar Hamacher  
Jonas Loellmann  
Valentin Loellmann  
Fabian von Spreckelsen



Season VIII  
24.5 – 9.9.2018

### *Meisenthal L'Âge du Verre / The Age of Glass*



Season IX  
14.9 – 18.11.2018

### *Botanic Psyche* Marlène Huissoud & Marcin Rusak



Season X  
23.11.2018 – 17.02.2019

### *Land/Scapes*

Group exhibition with Carine Boxy,  
Kaspar Hamacher, François Moret,  
Bela Silva and Piet Stockmans



19.1V – 23.1V.2017

### *Limited – Art – Edition*



23.11.2017 – 15.1V.2017

### *Art Elysées, Art & Design*



26 – 28 January 2018

### *#itineranceo2 with Atelier Jaspers*

at BOZAR, Brussels with Bela Silva,  
Kaspar Hamacher, Adrien Rovero,  
Nathalie Dewez



22 – 25 February 2018

### *Into The Stockmans Blue at Collect*

London, Saatchi Gallery, UK



7 – 11 March 2018

### *Phantasmagoria at Collectible*

Vanderborght Building, Brussels  
Group show with Lactitia Bica,  
Chen & Williams, Alexia de Ville,  
Kaspar Hamacher, Isaac Monté,  
Kustaa Saksi, Bela Silva,  
Frederik Vercrussse



19 – 22 April 2018

### *The Random Collection at Art Brussels*

Tour & Taxis, Brussels



12 – 17 June 2018

### *A New Layer Taiwan at Design Curio on Design Miami/Basel*

Hall 1, Messeplatz, Basel (CH)



12 September – 04 November 2018

### *Between Art & Design. The Belgian Scene*

at Kanal - Centre Pompidou, with  
Piet Stockmans, Damien Gernay,  
Kaspar Hamacher



8 – 9 September 2018

### *Meisenthal, Douglas Vase 10 years – Made in NY Series from Brooklyn to Brussels*

With François Azambourg at  
Spazio Nobile



6 – 9 September 2018

### *Dream Stones by Amy Hilton on Art On Paper* BOZAR, Brussels



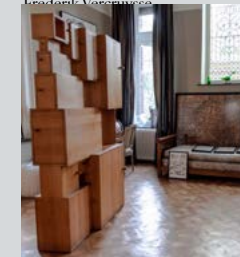
18 – 22 October 2018

### *The Random Collection at Interieur Biennale* Xpo Kortrijk



17 – 25 November 2018

### *IIDE, The International Interior Design Exhibition at Hôtel de la Poste, Brussels with Gert Voorjans (BE)*



9 December 2018

### *TLmag Africa's with Spazio Nobile featuring Ola-Dele Kuku and Aimé Mpane* Private House, Tervuren, with the AfricaMuseum

# 2016 — 2018

## SPAZIO — NOBILE

# Art & Design Exhibitions

## Season X – *Land/Scapes*, 23.11.2018-17.3.2019

Group Exhibition with Carine Boxy, François Moret, Kaspar Hamacher, Bela Silva, Piet Stockmans

## Season XI – *Formosa : A New Layer Taiwan meets Yii*,

22.3 – 12.5. 2019 – vernissage: 21.3.2019

Group exhibition with works by Anton Alvarez (Chili-SE), Sebastian Herkner (D), BCXSY (IS-NL-JP), Matti Klenell (SE), Jin Kuramoto (JP), nendo /Oki Sato (JP), Wonmin Park (KO), Poetic Lab (TW), Stina Löfgren (SE), Julie Richoz (FR-CH), Carina Seth Andersson (SE), TAF Architects (SE), Cheng-Tsung Feng (TW), Rock Wang (TW), Pili Wu (TW) & ten Taiwanese masters and craftsmen.

Art director: Lise Coirier (FR-BE), Pro Materia

Scenography: Rain Wu (TW)

This exhibition moves to Révélations, Grand Palais, Paris from 23-26.5.2019

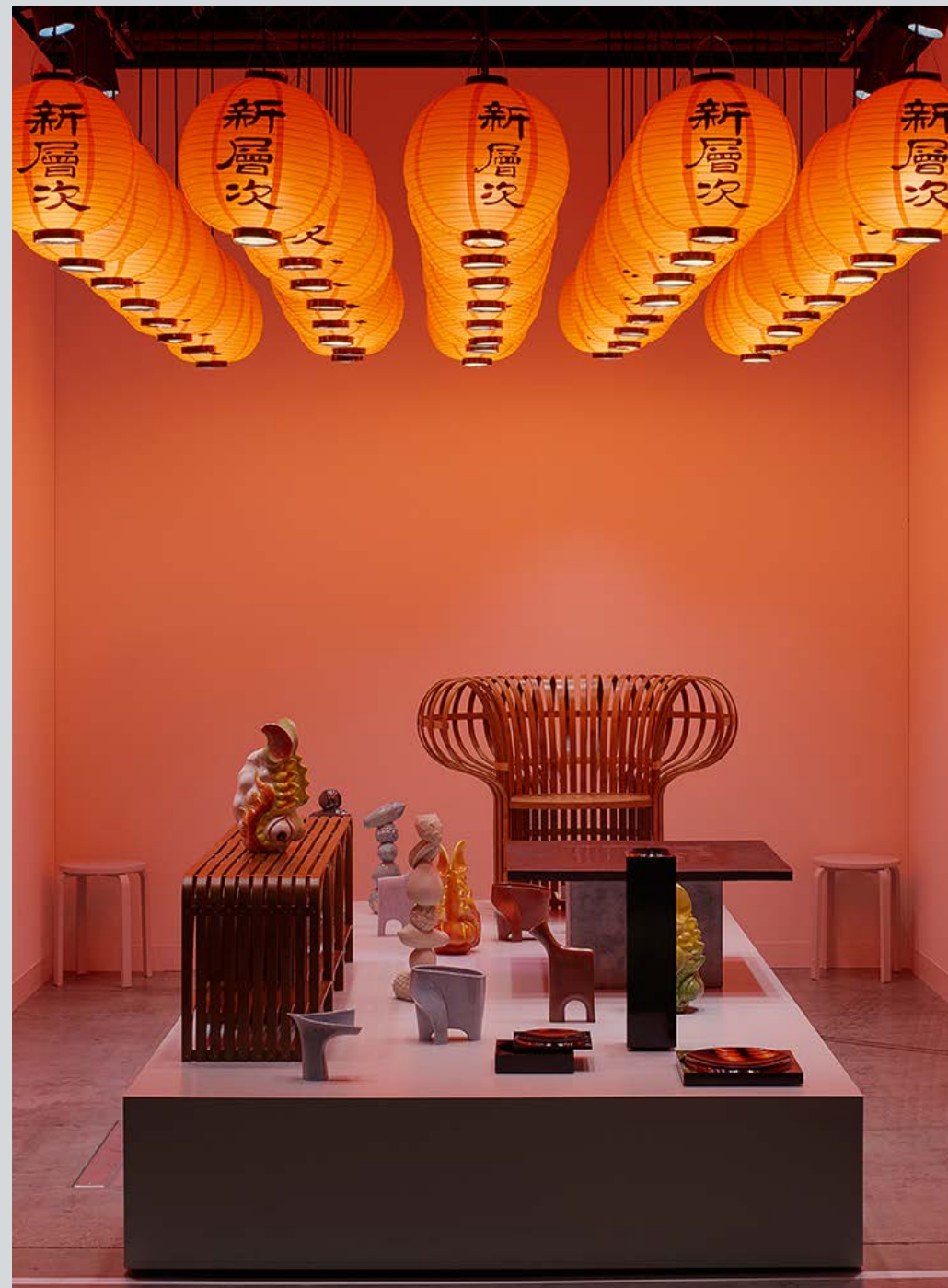
**Season XII: *The Finnish Season, Spring–Summer–Autumn–Winter*** in coll. with FinnCult (Finnish Cultural Institutes Benelux & France)& the Finnish Presidency to the EU

*-The Finnish Season : Spring* –at Galerie de l’Institut Finlandais, Paris, 24.4 – 30.7.2019 – vernissage : 23.4.2019

*-The Finnish Season : Summer* – 17.5 – 8.9.2019 at Spazio Nobile, solo show of Kustaa Saksi (finissage on 8.9 during Brussels Gallery Weekend) vernissage : 16.5.2019

*-The Finnish Season : Autumn* –13.9 – 22.12.2019 at Spazio Nobile: larger selection of Finnish artists and designers in the framework of Design September + conferences at Flagey of one Finnish designer in the scope of the Finnish Presidency to the EU (July-Dec 2019) – vernissage: 12.9.2019

*-The Finnish Season : Winter* –9.1.2020 –mid-March 2020 at Spazio Nobile



# Art & Design Fairs & Events

- BILY- Brussels I Love You, Contemporary Art Walk, at Spazio Nobile & in the city, 9-17.2.2019  
within Season X-Land/Scapes, Group Exhibition with Carine Boxy, François Moret, Kaspar Hamacher, Bela Silva, Piet Stockmans, Sunday brunch on 17.2.2019, 12-6pm

- Collectible, Pioneering Design Fair, Vanderborcht Building, Brussels, 14-17.3.2019  
At the fair : Jeanine Cohen, Vincent Fournier, Bela Silva, Javier Fernandez, Kaspar Hamacher, Harri Koskinen, Mari Isopahkala, Laura Laine, Päivi Rintaniemi, Marcin Rusak, Teemu Salonen, Adi Toch, Man Yau, ... in coll. with FinnCult (Finnish Cultural Institutes Benelux & France)

-The Finnish Institute in France, galerie de l'Institut finlandais, 24.4 – 31.7.2019  
with a selection of Finnish artists and designers, in coll. with FinnCult (Finnish Cultural Institutes Benelux & France)

- Art Books presentation at Spazio Nobile, March-April 2019 Vincent Fournier, Space Utopia, ed. Noe x Rizzoli & Post Natural History with Noebe

- Art Brussels, 37th edition, 25-28.4.2019, Tour & Taxis, Brussels, Kustaa Saksi, tapestries & Bela Silva, ceramics, in coll. with FinnCult (Finnish Cultural Institute Benelux & France)

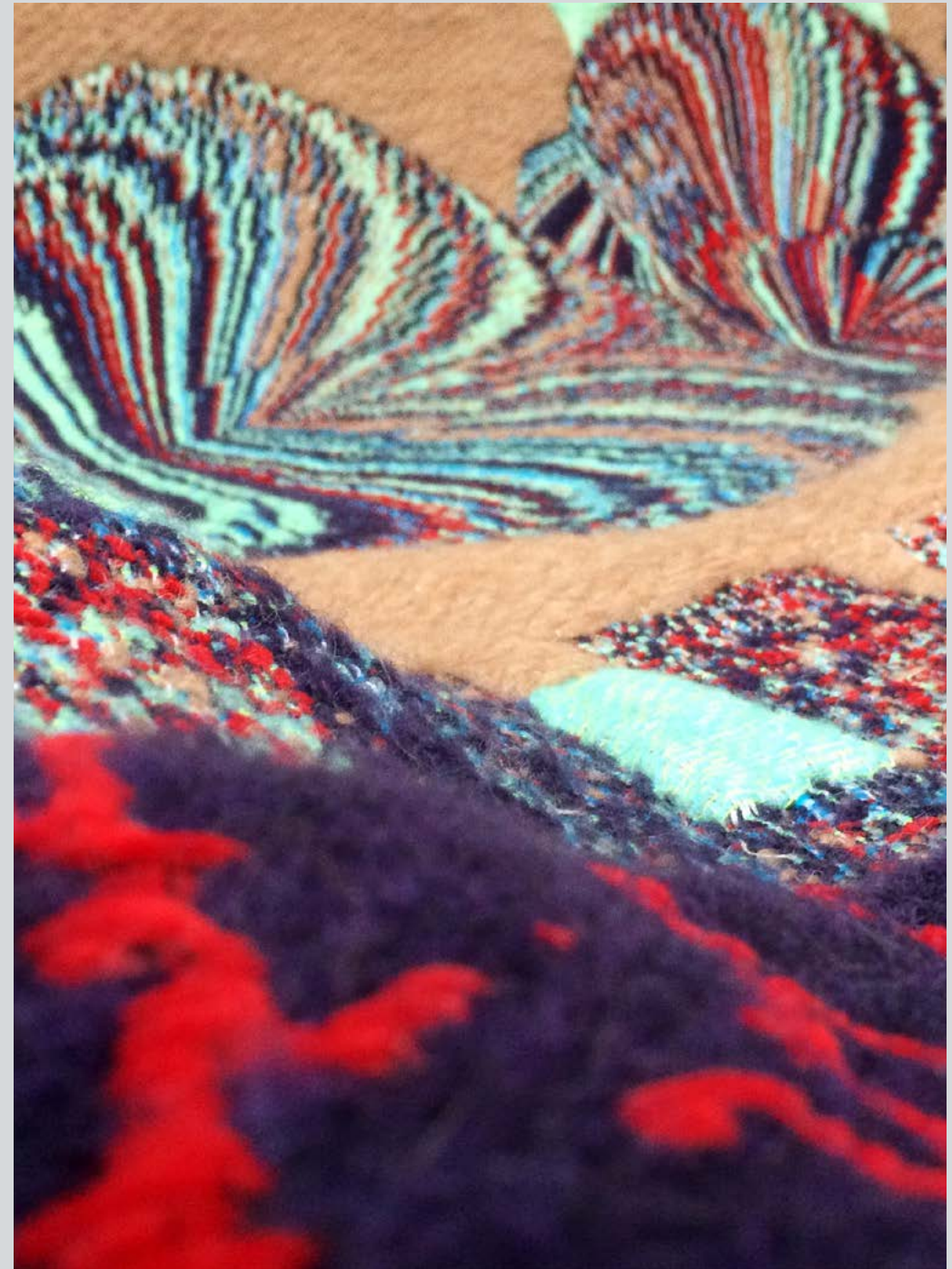
- Révélations Biennale, 23-26.5.2019, Grand Palais, Paris

\*Spazio Nobile is hosted by La Galerie Collection, Ateliers d'Art de France, as the guest international gallery on this biennial venue, in coll. with FinnCult (Finnish Cultural Institute Benelux & France). Theme : *Keep Your Garden Alive*

\*Spazio Nobile x Centre culturel taïwanais à Paris,  
*Formosa : A New Layer Taiwan meets Yü*

- Brussels Gallery Weekend, 5-8.9.2019  
- Brussels Design September, 9.2019

TBC other fairs such as PAD - Design Miami/Basel – NOMAD (Venice) in 2019-2020.



# Pro Materia Consultancy

As a creative consultancy, Pro Materia has developed – over the past 20 years of local and international practice – its skills and expertise towards art & design thinking and branding, content production with a strong visual and editorial impact and communication strategy. Ongoing projects are connected to the design-led development and branding of premium design companies: art direction for Limited Edition and 2tec2 (BE), editorial content and communication strategy for Stellar Works (JP-FR-CH), design consultancy and focus on limited editions and bespoke designs for premium collectors: Thonet (D), Lasvit (CZ), Maison Vervloet (B).



Photo: Frederik Verduynde, 'Limited Edition', art photography project for Limited Edition / 2tec2, 2016

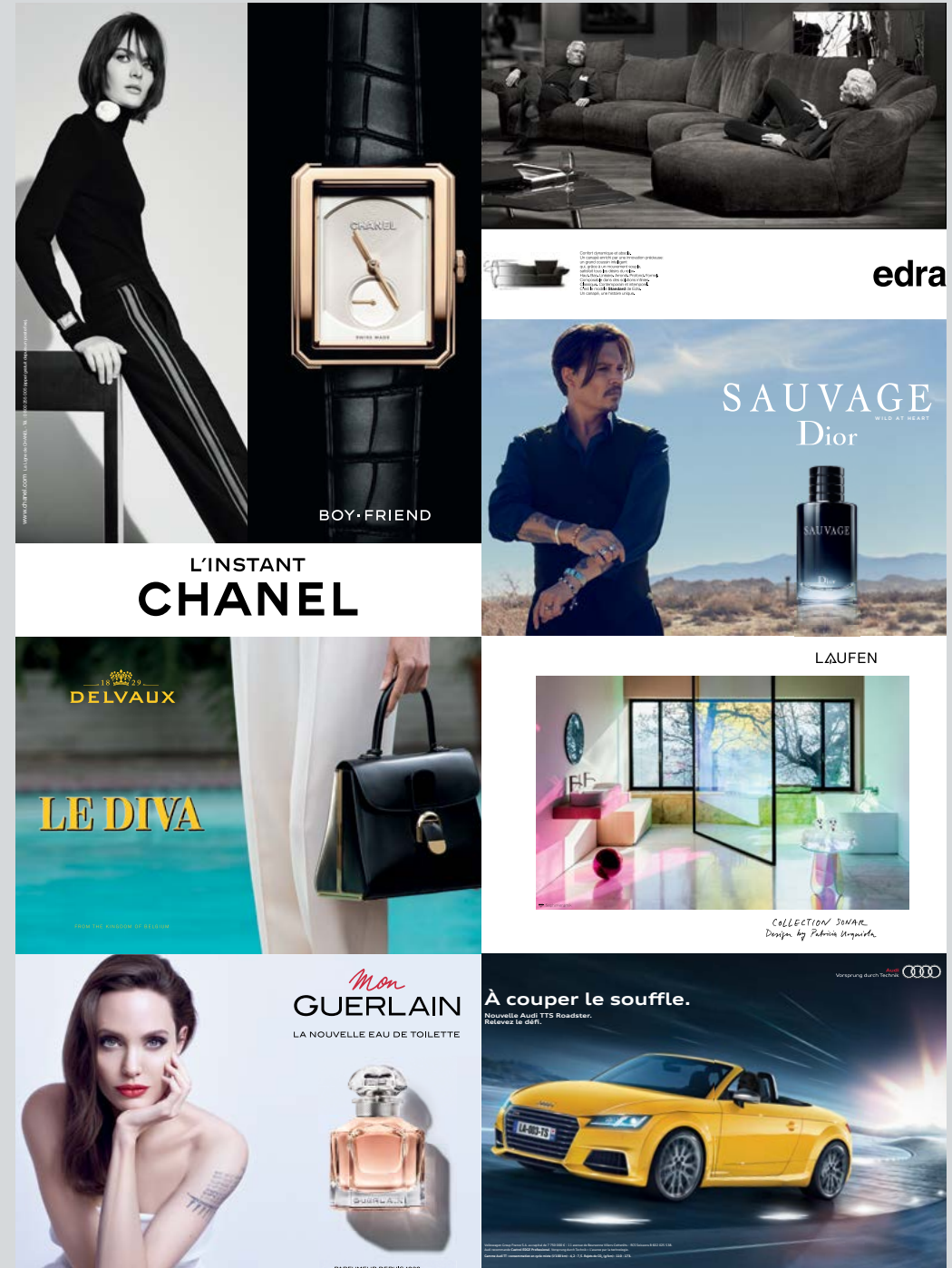


# Brand Partners

Print advertisement is available in TLmag. Published two times a year, TLmag collaborates with accessory, furniture, car, jewellery, watches, fashion, hospitality, lighting and textile brands appropriate for the focus of each issue. TLmag offers different levels of exposure: interior front cover, interior back cover, back cover, opening pages, double spreads, single-page campaigns and looks to integrate each artwork within the overall flow of each issue.

## Main Brand Partners:

2tec2, Abet Laminati, Alaïa, Armaggan, Audi, BMW, Brokis, Bulò, Chanel, Delvaux, Diane von Furstenberg, Dice Kayek, Dior, Diptyque, Edra, Guy Laroche Paris, Henrik Vibskov, Hermès, add up Guerlain, Shang Xia, House Hotels, Hussein Chalayan, Iittala, Issey Miyake, Jaguar, Jean Paul Knott, Jovoy, Karl Lagerfeld, Kenzo, Klaus K Hotel, Land Rover, Lasvit, Laufen, Limited Edition, Maison Dandoy, Maison Francis Kurdjian, Maison Kitsuné, Maison Martin Margiela, Maserati, Mini, Nude Glass, Nurus, Panerai, Paule Ka, Piaget, Pierre Bergé & Asscoiés, Pulpo, Rado, Serge Lutens, Shiseido, Stellar Works, TF Urban, The Rug Company, Thonet, Vipp, Vitra, Wästberg, ect.

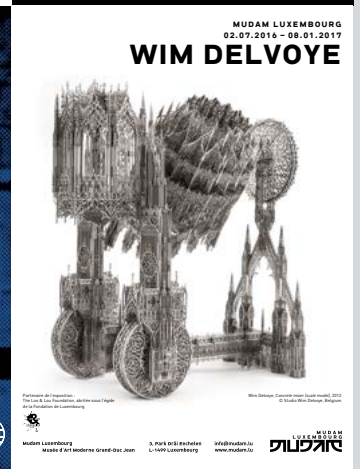
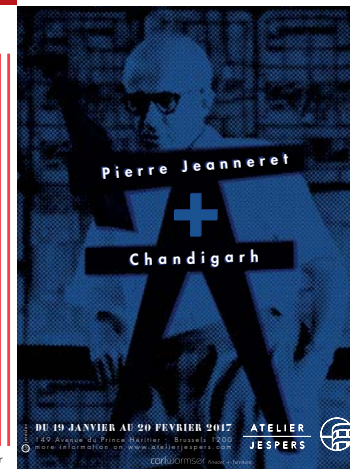
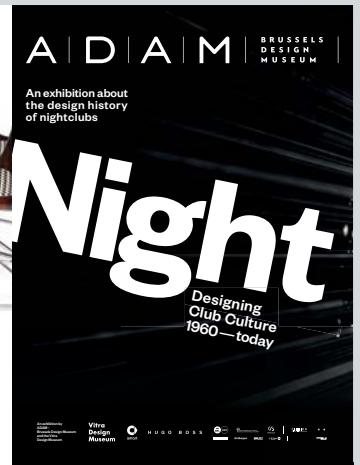


# Gallery & Museum Partners

TLmag maintains strong relationships with design/art and art galleries throughout the world. A steady presence at major gallery fairs, such as Design Miami, makes TLmag a strong media partner for the creative industries. Positioned at the heart of a growing Brussels art market, the magazine frequently collaborates with a slew of local galleries and art events. TLmag also collaborates with major museums. TLmag has worked closely with organisations like Norwegian Craft for Révélations Paris, for Polish Cultural Institute and Culture.pl, IKSV Istanbul, and in 2017, Taiwan National Craft Institute. Pro Materia has long worked to link young creatives with potential cultural and commercial platforms.

## Main Gallery & Museum Partners:

Atomium, Ammann Gallery, James Gallery, Galerie Laffanour-Downtown, Galerie Maria Wettergren, MAD Paris, National Museum Finland, Institut finlandais, Galerie Gosserez, ... Galerie BSL, Galerie Mougin, Galerie Jacques Lacoste, Puls Gallery, Galerie Daniel Templon, Triode Gallery, Spazio Nobile Gallery, Axel Vervoordt, Maison du Danemark, Institut Suedois MUDAM Luxemburg, MUDAC Lausanne, Musverre, Yigge Ceramic Arts Museum, Vessel Gallery, ect.



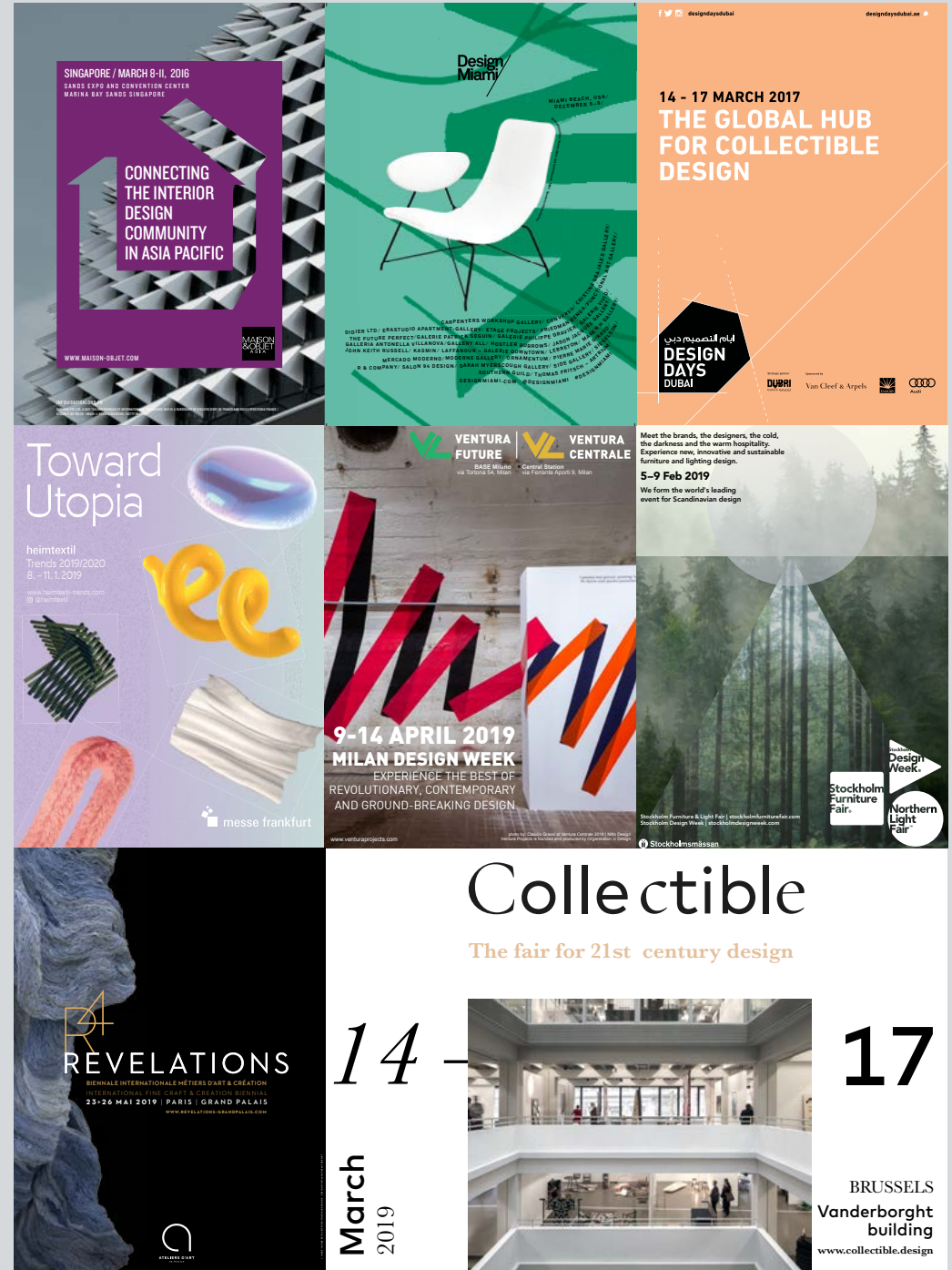
# Event & Media Partners

## Events, Fairs and Festivals:

Ambiente, Art Brussels, Biennale Design Internationale Saint-Etienne, Biennale Interieur, Biennale Internationale de Vallauris, BRAFA, Brussels Art Days, Brussels I Love You, Business of Design Week Hong Kong, Design Days Dubai, Dubai Design Week, Design Junction, Design Miami/, Design September Brussels, Design Show Shanghai, Design Parade, DMY Berlin, Domotex, Dutch Design Week, FIAC, Heimtextil, Helsinki Design Week, Iconic House Network, imm Cologne, Istanbul Design Biannual, Istanbul Contemporary, London Design Festival, London Design Biennale, Lunch With An Architect, Maison&Objet, PAD, Paris Design Week, Paris Photo, Texworld, Design Days Tokyo, Stockholm Furniture & Light Fair, Volta

## Media & PR:

ART Communications, Alexandra PR, Alpha Kilo Creative, Architonic, Arthouse, Atelier PR, Blue Medium, Camron PR, Communicart, Designboom, Di Palma Associati, DigitalMind, Duende, Fitzandco, Hello Third Eye, Hironnelle Communication, IDEAT, M18pr, Modern Magazine, Nadine Johnson PR, Negri Firman, Susan Lewin Grant PR, Zetteler, ect.



# Themes: 2019

## TLmag 31: *The Islands of Creation* Printemps / Été - Spring / Summer 2019

From Gauguin's Tahiti to Thoreau's Walden to the tradition of artists going to the Villa Medici in Rome, that need for isolation, space, and time, separate from daily life, has been a formative, if not critical experience for artists, thinkers, and creative people of all genres throughout history.

TLmag 31, *Islands of Creation*, is not specifically referring to an island as a landmass floating in water, but the idea of the physical retreat or removal of oneself from attachments and demands, that lets one truly disconnect and get to the core of their work. It will incorporate the concept of *Ex oriente Lux*—translated as , “towards the East, light,” and delve into the multifaceted, contemporary art and design scene in vibrant cities in the Middle East like Istanbul, Dubai, Sharjah and Oman. In the 21st century, when we are always connected and always “on”, artist residencies such as the Fogo Island Arts Center or exhibitions such as the Naoshima Art Islands in Japan seduce with the possibility of getting back to nature in spectacular ways, and keep that essential connection to nature, and therefore that primitive instinct to create, alive and well. The edition will also explore the experience of island living, the mythologies surrounding this experience, particularly with regards to artists, and discuss the rugged and beautiful landscapes of the Nordic fjords, the creative scene in Taiwan, the Caribbean, Iceland, etc. It will look at artist residencies and their role in the art world, and the ripple effect that can occur during moments of intense creativity.



photo by Vincent Fournier

## Themes: 2019

### **TLmag 32: *Contemporary Applied*** **Automne/Hiver - Autumn/Winter 2019-2020**

Contemporary Applied, will dive into the world of contemporary applied arts and the culture of craftsmanship in the early 21st century. The evolution of mankind's creation and use of tools to create is the defining link across cultures. With the development of AI, robots as workers, and 3-D printing, the importance of the handcrafted and human touch has never been more important. In the design world, there has been a reinvigorated return to craft, the Slow movement in food, art, design and architecture, brands and businesses revitalizing heritage traditions. The edition will feature experimental artists and designers, new movements in architecture, spotlight some of the museums of applied arts in Europe and elsewhere, and give focus on the curators dealing with contemporary applied arts, as well as some of the leading heritage brands who support craft in different ways.



photo by Maison Drucker

# Rates

## **Print Rate** (excl. 21%)\*

Full Page: 4200 €

Double Page (Strategic Position): 5670 €

Facing Contents Page: 4890 €

Inside Back Cover: 4450 €

Back Cover: 6650 €

## **Print Advertorial**

2 Pages: 2900€

3 Pages: 4200€

4 Pages: 5670€

## **Online Rates** (excl. 21%)\*

Banner: 500€ per month

Customised Banner: upon request

Online Edition (3 articles): 3000€

Online Edition (5 articles): 5000€

## **Newsletter Rates** (excl. 21%)\*

TLmag Monthly Digest Newsletters

(15,000 + contacts) Top Item: 700€

## **Combo Rates**

Print, Web, Newsletter & Social Media

Advertisement packages: upon request

\* (intracommunautary VAT tax

international clients outside Belgium)



# Specifications

## Print

Vertical Half Page: 105mm x 280mm

Full Page: 210mm x 280mm

Double Page: 420mm x 280mm

+5mm bleed + cropmarks/ PDF, CMYK

## Online Banners

(.jpeg & .gif with URL)

250 x 250 px (Square Pop-Up)

300 x 250 px (Medium Rectangle)

240 x 400 px (Vertical Rectangle)

Customised Banner: upon request

## Newsletter

TLmag Monthly Digest: 700px by 700px

Customised Newsletters: upon request

## Terms & Conditions

+ VAT: 21% (Belgium)

+ We reserve the right to charge additional fees for major alterations.

+ Word counts submitted over a max 50 word limit will be edited.

+ Copyediting may be made at the discretion of the editorial team.

+ Images submitted will be resized.

+ TLMag is not liable for any loss or damage from errors, late publication or non-publication.



# Our Colophon

**Editor in Chief & Publisher:**

Lise Coirier, [lise@tlmagazine.com](mailto:lise@tlmagazine.com)

**Managing Editor:**

Blaire Dessent, [blaire@tlmagazine.com](mailto:blaire@tlmagazine.com)

**Brussels Office**

**(mailing & billing address):**

Pro Materia asbl

Rue Franz Merjay 142

B-1050 Brussels

VAT BE0470 273 816

**Paris Office:**

7 rue Roy F-75008 Paris

**Advertising & Special projects:**

send us an email to: [info@tlmagazine.com](mailto:info@tlmagazine.com)

or call us + 32 (0) 2 768 25 10

**Creative Consultancy enquiries:**

Lise Coirier, [lise@promateria.org](mailto:lise@promateria.org)

+32 (0) 475 53 19 88

Louisa Vermoere, [louisa@promateria.org](mailto:louisa@promateria.org)

**Communication & Subscriptions:**

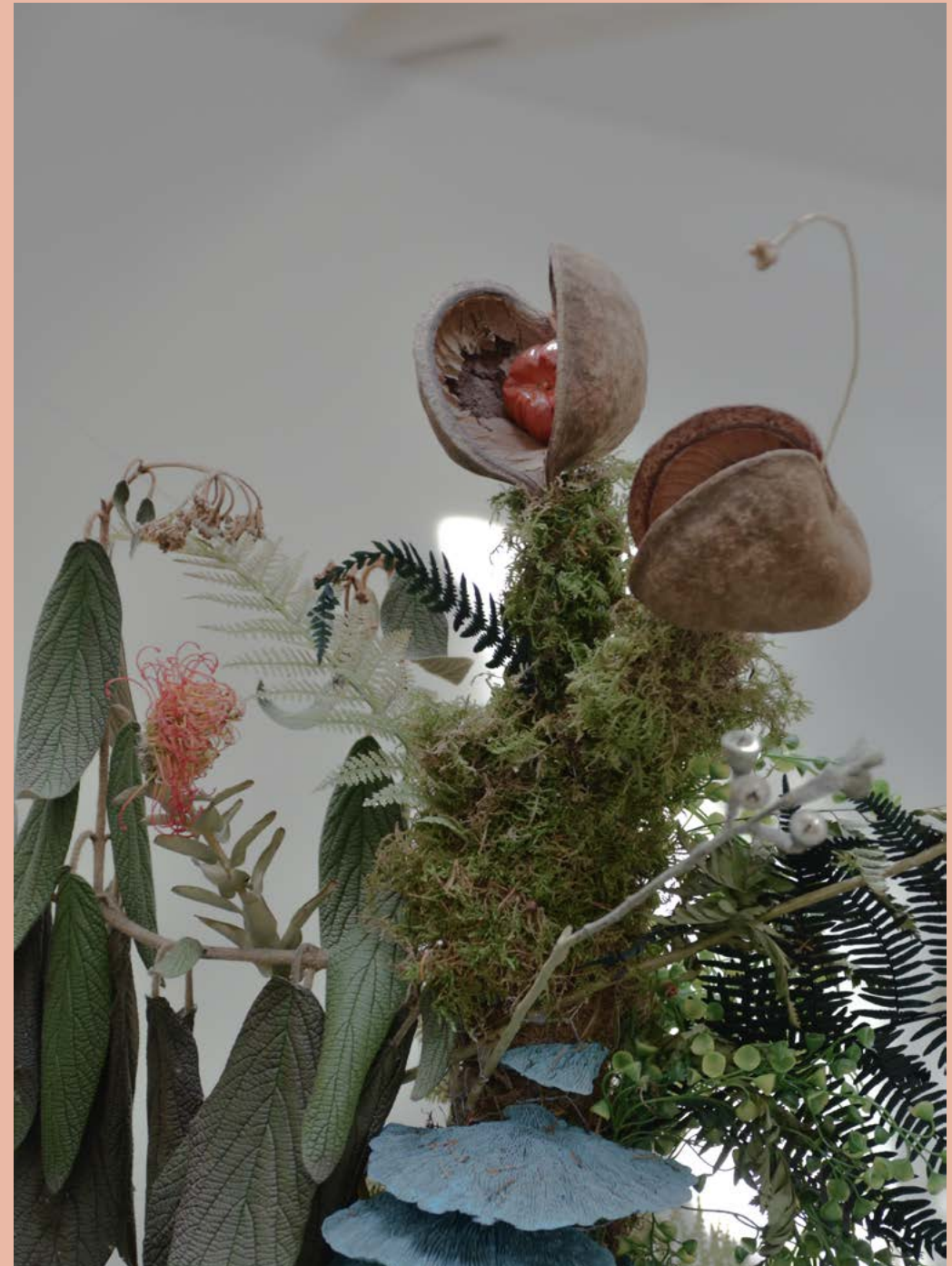
Salomé Elbaz, [salome@tlmagazine.com](mailto:salome@tlmagazine.com)

**Web Master:** Floris Douma, Cometa, NL

[www.tlmagazine.com](http://www.tlmagazine.com)

[www.promateria.org](http://www.promateria.org)

[www.spazionobile.com](http://www.spazionobile.com)



@tlmag  
www.tlmagazine.com



mag

True Living of Art & Design